

# Caratteristiche tecniche TRIESTE

## Specifiche di prodotto / Product specifications

**Armatura / Weave** reps ordito/warp reps

**Spessore / Thickness** 0,85 mm

**Peso / Weight - UNI 9213/3** 485 gr/m<sup>2</sup>

## Densità armatura / Weave density - UNI 1049/2

**Ordito / Warp** 18,2 fili-yarn /cm

**Trama / Weft** 5,8 fili-yarn /cm

## Prestazioni tecniche / Technical specifications

### Carico rottura / Breaking load - UNI EN ISO 1421

**Ordito / Warp** 150 Kg/5cm

**Trama / Weft** 55 Kg/5cm

### Allungamento a rottura / Breaking elongation - UNI EN ISO 1421

**Ordito / Warp** 20 %

**Trama / Weft** 20 %

## Composizione / Composition

**Titolo filato Ordito / Warp yarn** 2.000 dtex

**Titolo filati Trama / Weft yarn** 2.000 dtex

## Componenti tessuto / Fabric components

**COMPOUND PVC** 85 %

**PES** 15 %

## Finitura / Finishing

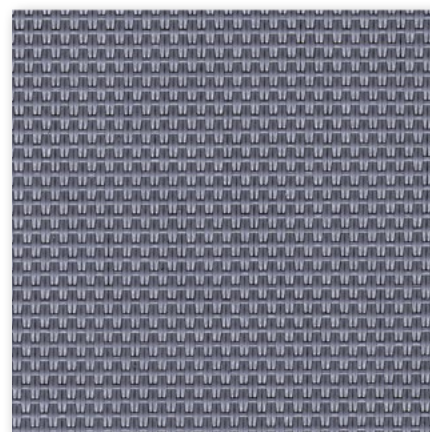
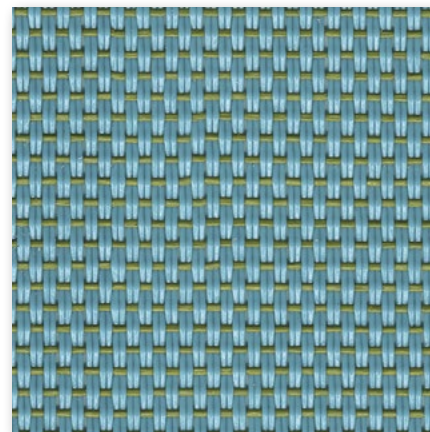
### Carico rottura / Breaking load - UNI EN ISO 1421

**Termofinissaggio / Thermo-fixing** SI / YES

**Altezza produzione / Height production** Min. 140 cm - Max. 235 cm

Tolleranza nei dati ± 5 % / Tolerance range ± 5

RELEASE: 08/01/2018



CATAS®



ISO 9001  
Certificato n. 5206/0



ISO 9001  
Registration number: IT-70404

# Campioni colore TRIESTE

Color samples for TRIESTE

## TBL (tessuto pieno)



Barcola 3149



Basovizza 2224



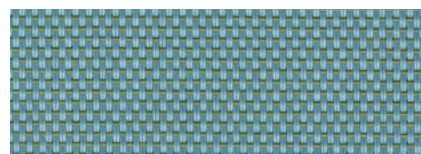
Beige 5161



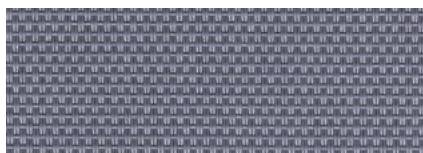
Bianco 0108



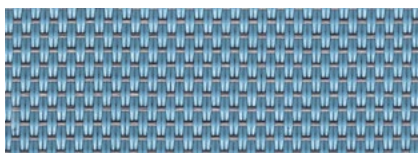
Canovella 3111



Duino 4039



Grigio 0600



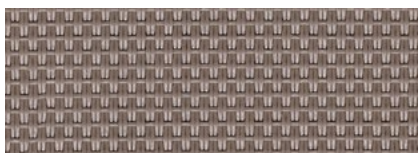
Miramare 4020



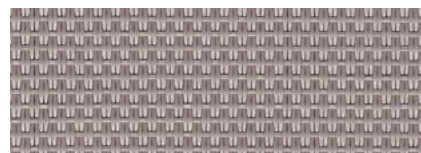
Perla Nera 0604



Prosecco 2161



Talpa 5102



Tortora 0711

# Caratteristiche tecniche

## NET

### Specifiche di prodotto / Product specifications

<b>Armatura / Weave</b>	NET
<b>Spessore / Thickness</b>	1 mm
<b>Peso / Weight - UNI 9213/3</b>	560 gr/m <sup>2</sup>

### Densità armatura / Weave density - UNI 1049/2

<b>Ordito / Warp</b>	6,2 fili-yarn /cm
<b>Trama / Weft</b>	5,2 fili-yarn /cm

### Prestazioni tecniche / Technical specifications

#### Carico rottura / Breaking load - UNI EN ISO 1421

<b>Ordito / Warp</b>	280 Kg/5cm
<b>Trama / Weft</b>	230 Kg/5cm

#### Allungamento a rottura / Breaking elongation - UNI EN ISO 1421

<b>Ordito / Warp</b>	19 %
<b>Trama / Weft</b>	15 % >

<b>Resistenza a fatica / Fatigue strenght</b> EN 1728:2000 - EN 15373:2007 - LIVELLO 3° SEVERO / 3° HARD LEVEL	200.000 cycles / 1.000 N
---	--------------------------

<b>Resistenza alla luce / Lightfastness</b> EN ISO 4892-2/06 - COL. 0152-5154-1140-0600-4202-0108-4104-1100-2116	8 - val. max
---	--------------

<b>Solidità colori allo sfregamento / Color fastness to rubbing</b> EN ISO 105-X12:2003 - COL. 4165-1101-2102-4154-4104-1195	5 - val. max
---	--------------

<b>Resistenza ad abrasione / Abrasion resistance</b> MARTINDALE EN ISO 12947-2:1998	> 100.000 cycles
--	------------------

### Composizione / Composition

<b>Titolo filato Ordito / Warp yarn</b>	4.700 dtex
<b>Titolo filati Trama / Weft yarn</b>	4.700 dtex

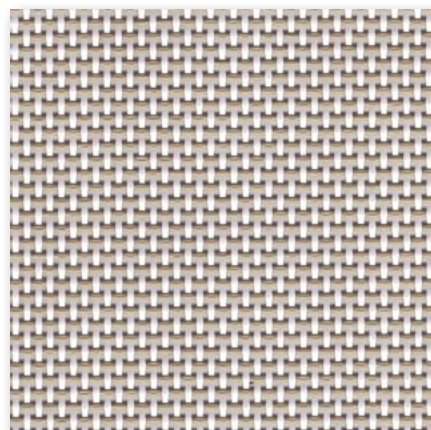
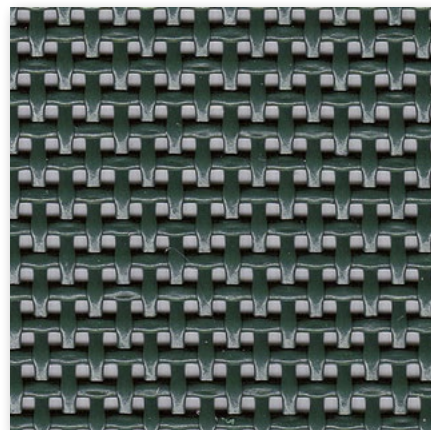
### Componenti tessuto / Fabric components

<b>COMPOUND PVC</b>	77 %
<b>PES</b>	23 %

### Finitura / Finishing

#### Carico rottura / Breaking load - UNI EN ISO 1421

<b>Termofinissaggio / Thermo-fixing</b>	SI / YES
<b>Altezza produzione / Height production</b>	Min. 140 cm - Max. 235 cm



CATAS®

ISO 9001  
Certificato n. 5206/0

CISQ  
ISO 9001  
Registration number: IT-70404

Tolleranza nei dati ± 5 % / Tolerance range ± 5  
RELEASE: 20/03/2018



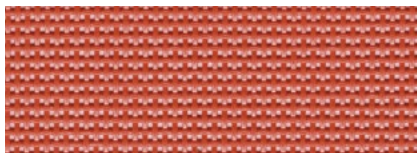
# Campioni colore NET

Color samples for NET

## TBL (tessuto pieno)



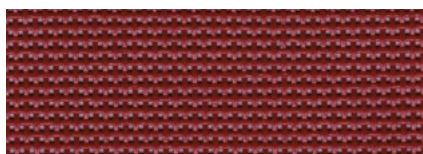
Abyss 4217



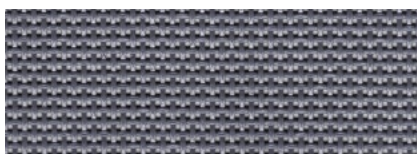
Arancione 2116



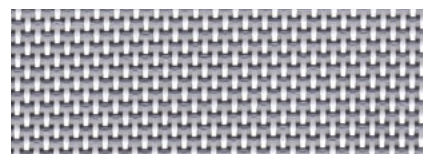
Bianco 0108



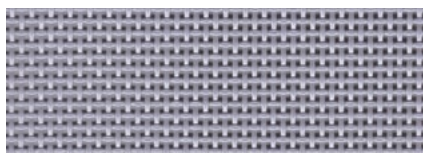
Crimson 2109



Dark Grey 0670



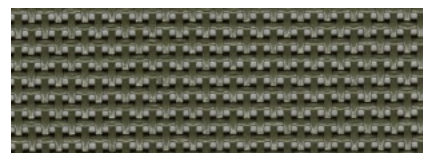
Ghiaccio 0601



Glacier Gray 0735



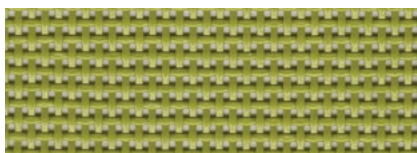
Nero 0400



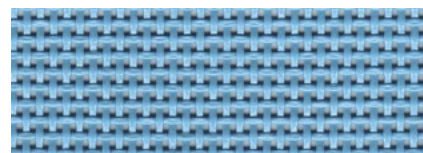
Old Green 3038



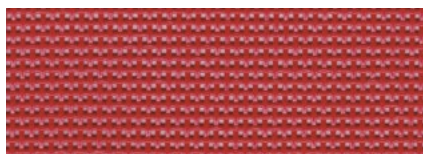
Papyrus 0271



Pistacchio 3124



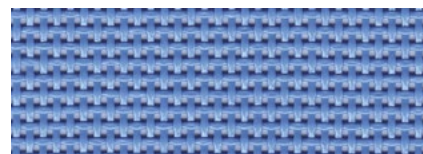
Pitufos 4219



Ponsettia 2313



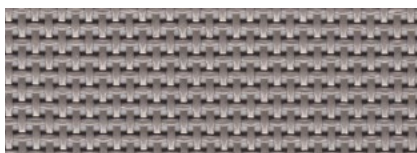
Royal Blue 4104



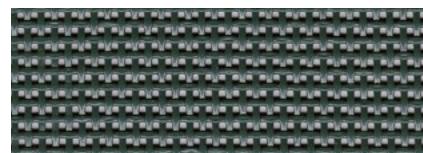
Skyline 4150



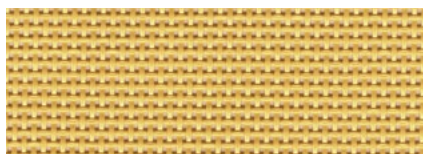
Talpa



Tortora 0711



Verde Tirolo 3187



Zabaione 1141